



YEAR 6

Summer Term Newsletter



English



During the spring term, we will focus all of our literacy learning on these two wonderful texts. Starting the year with 'Children of Benin Kingdom'. The children will be equipped with the relevant skills to be able to write a balanced argument as well as an eight part narrative.

As we progress further into spring one we will read the 'The eye of the wolf'. In this unit, the children will have the opportunity to write an alternative ending, whilst also exploring and writing monologues and recounts.

Alongside these writing units, we will also focus on a range of fiction, poetry and non-fiction texts in our guided reading sessions, where children will be taught and given time to demonstrate their predictions, comprehension and ability to summarise a text in a variety of ways.



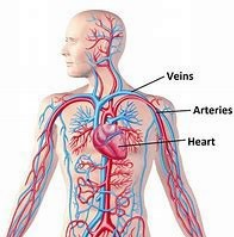
Maths

We will be following the Powermaths programme, which challenges and stretches children's thinking and skills in mathematics. The units we will cover this term include:

- * Problem solving with all four operations
- * Decimals
- * Percentages
- * Algebra

During the spring term, the children will also review previously taught units.

Science



This unit 'Animals, including humans' takes children through six lessons where they learn how to: identify and name the main parts of the human circulatory system, and describe the functions of the heart, blood vessels and blood; recognise the impact of diet, exercise, drugs and lifestyle on the way their bodies function; and finally, they learn how to describe the ways in which nutrients and water are transported within animals, including humans.

During the afternoon sessions children will be taught:

History - Census

Art - Artist Study

Computing - Analysing Data and spreadsheets

Re - Christianity - Is anything ever eternal?

JIGSAW - Dreams and Goals

Music - Songs of WW"

MFL - Saying what I and others do



PE is every Friday

Our focus this half-term will be the Cognitive learning cog.

For all PE sessions please remember to remove earrings and send children in with their PE kits. Can we please remind you that children should be wearing black joggers, white, red or house coloured t-shirts and a black sweater.



Weekly maths homework will be set between Monday and Wednesday. Grammar and spelling homework will be handed out on a Friday and should be returned the following Thursday. If your child finds any of this difficult, please advise them to speak with the class teacher and extra support can be given.

Reading Plus will run alongside home reading books and journals, so please ensure children bring their reading books to school daily.